

PORT FOLIO

Leila Bazzi
Interior Design
2025

Index

- 1 About
- 2 Workscape
- 6 Naples, Florida
- 10 Biophilic Carpet
- 12 Brookstone
- 16 Magnifica Anmone

About



Hey there! I'm a Detroit-based designer diving into the world of Interior Design at the College for Creative Studies. I've always been a visual learner, and I needed a creative outlet, so I naturally gravitated towards design. My love for it all kicked off with Barbie! Seriously, anyone who knew me as a kid can vouch for the fact that I was in my happy place whenever I had my dollhouse in front of me. I could spend hours rearranging furniture and creating little worlds for my dolls!

As I got older, my design obsession continued to grow with games like Minecraft and Sims, where I could unleash my creativity in a whole new way. Now, I'm all about embracing design in every form and having a blast while doing it. It feels amazing to turn my childhood passion into a career!

Workscape

Commercial Space - 2024



Workscape is an innovative commercial office environment inspired by the Steelcase Next Competition. The design of this workspace draws upon the concept of playfulness; a core element reflected in both the name and the spatial arrangement. The concept of 'workscape' merges the functionality of a professional office setting with the creative freedom found in dynamic, interactive spaces. This approach is evident in the thoughtful incorporation of vibrant color schemes, distinctive and adaptable workspaces, and playful patterns throughout the interior. These elements are purposefully designed to foster collaboration, encourage creative thinking, and enhance employee well-being. By blending aesthetic appeal with functional design, Workscape redefines the traditional office environment, creating a space that is both inspiring and conducive to productivity.

Research

Commercial Space - 2024



Sight: The Commission for Architecture & the Built Environment and the British Council for Offices found that good lighting and adequate daylight can increase by up to 20%.

Smell: EcoBreeze study suggests “Peppermint is energizing and refreshing [...] Rosemary encourages clear thinking, improves memory and energizes the mind.”

Sound: The National Library of Medicine found that “sound level of 110 dB was an important contributor to individuals’ performances”

Touch: The University of Pacific Scholars found that when using “active chairs” increases oxygen levels to your brain thus resulting in higher energy levels and improved mental alertness, boosting productivity”.



Color in a workspace plays a crucial role in influencing productivity, mood, and creativity. The importance of color lies in its ability to evoke certain emotions and stimulate specific areas of the brain.

Blue is often associated with calmness, focus, and productivity

Green is linked to nature and renewal promoting balance, harmony, and creativity.

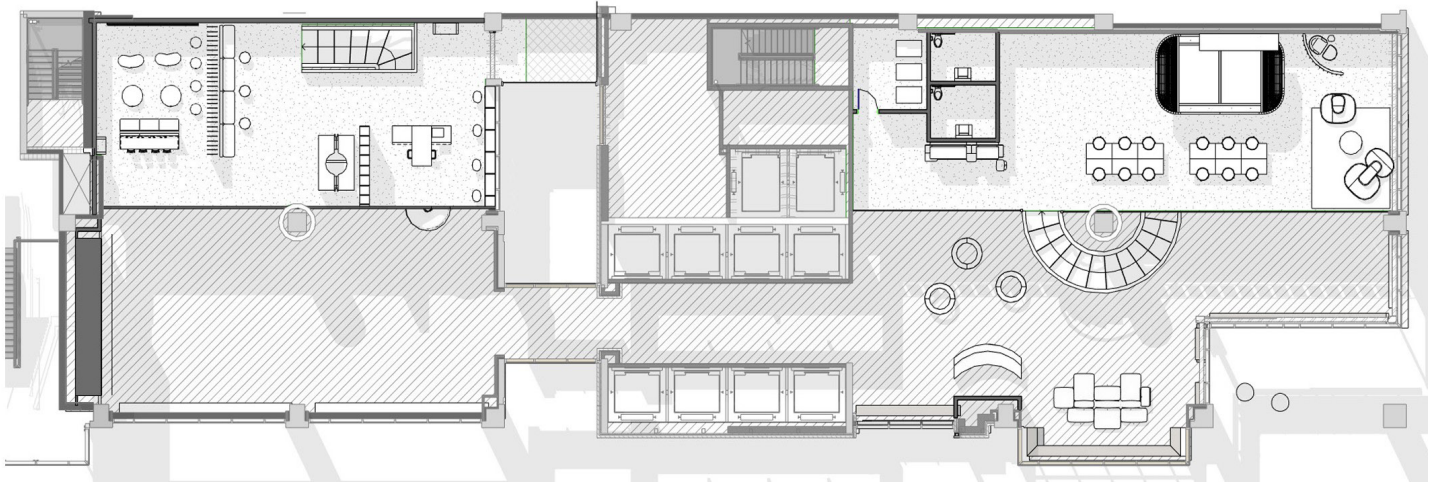
Yellow is known for its energizing and uplifting qualities.

Orange combines the energy of red with the warmth of yellow, making it a color that promotes enthusiasm, creativity, and social interaction.

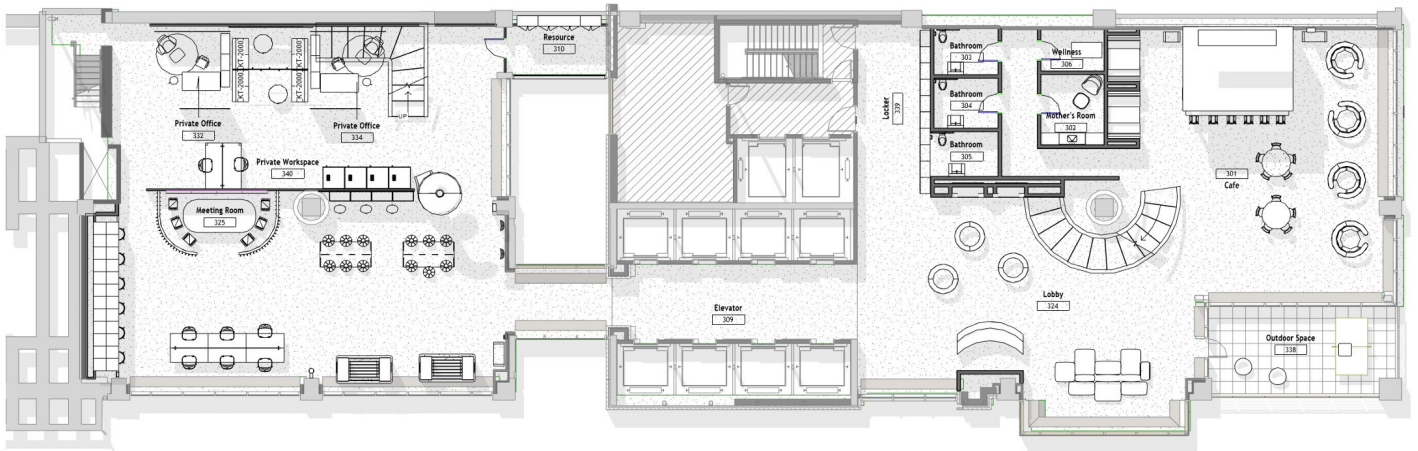
Purple promotes a sense of introspection and focus, allowing individuals to delve deep into their work with clarity and insight.

Floor Plans

Commercial Space - 2024



Mezzanine



Level One

Renderings

Commercial Space - 2024

Open Workspace



Dining Area



Training Room



Naples, Florida

Luxury Residents - 2023



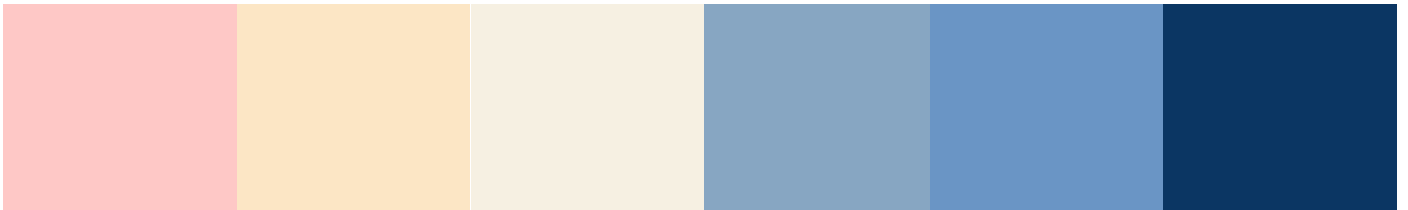
The Naples Residence was a significant residential sponsor project that I had the privilege of participating in, ultimately earning first place for my design. The primary goal of this project was to create a family oasis, a space that felt both inviting and nurturing. To achieve this, I carefully considered the interplay of color, materials, and furniture choices, ensuring each element contributed to an overall sense of harmony and comfort. I utilized SketchUp and Enscape to develop detailed 3D renderings, which allowed me to visualize the space and make informed design decisions. This experience not only honed my technical skills but also deepened my understanding of how thoughtful design can enhance the quality of family life.

Palette

Luxury Residents - 2023



I was deeply inspired by Mykonos, Greece, aiming to create a luxurious oasis while seamlessly incorporating the client's love for pops of pink. The design balances the serene elegance of Mykonos with vibrant touches that reflect the client's personal style.



Floor Plan

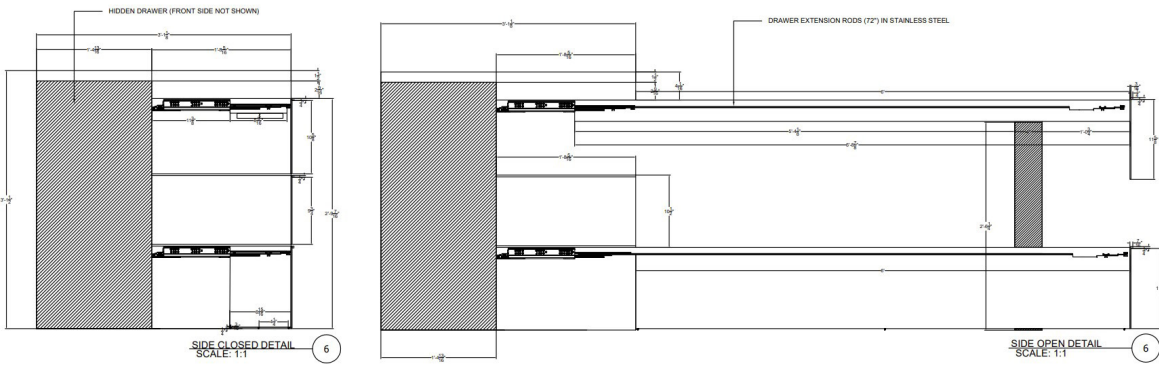
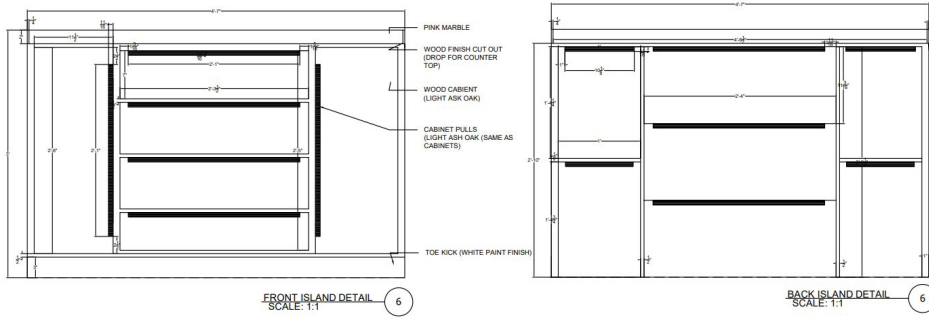
Luxury Residents - 2023



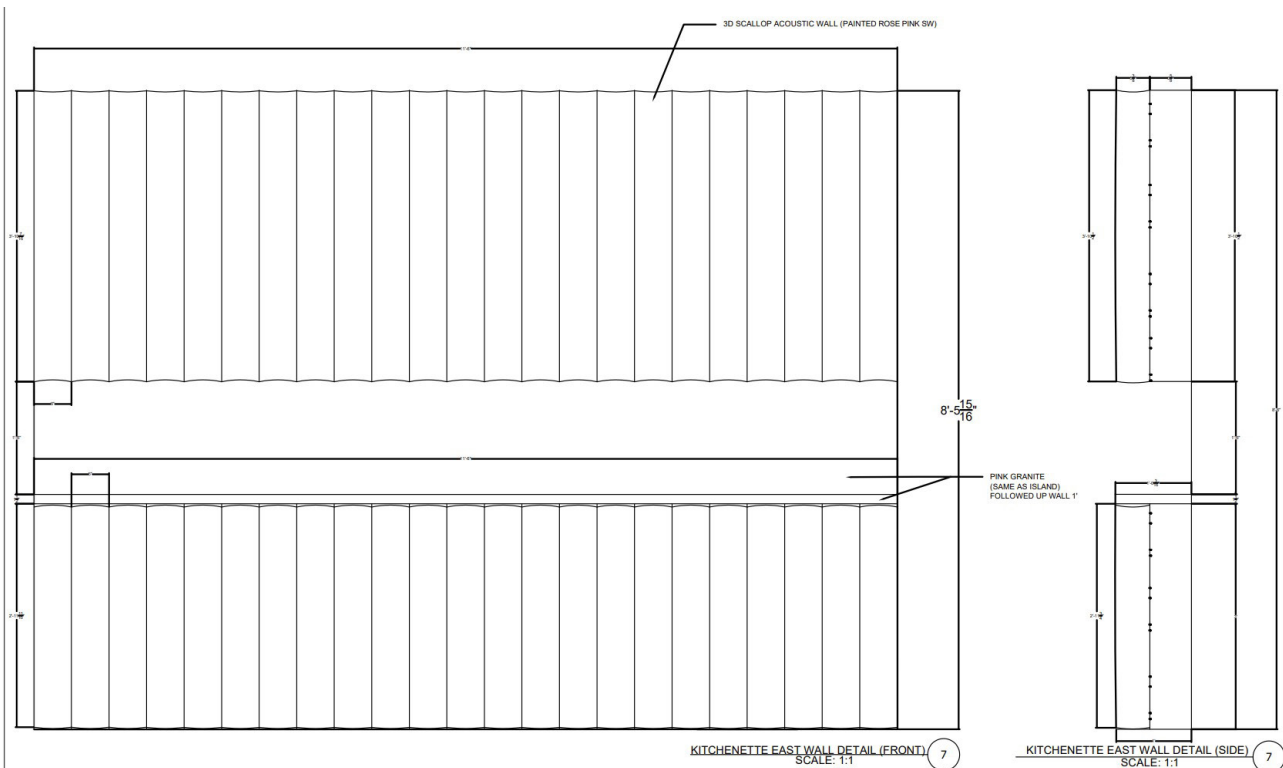
Details

Luxury Residents - 2023

Island Detail



Counter Detail



Biophilic Carpet







Material Exploration - 2023

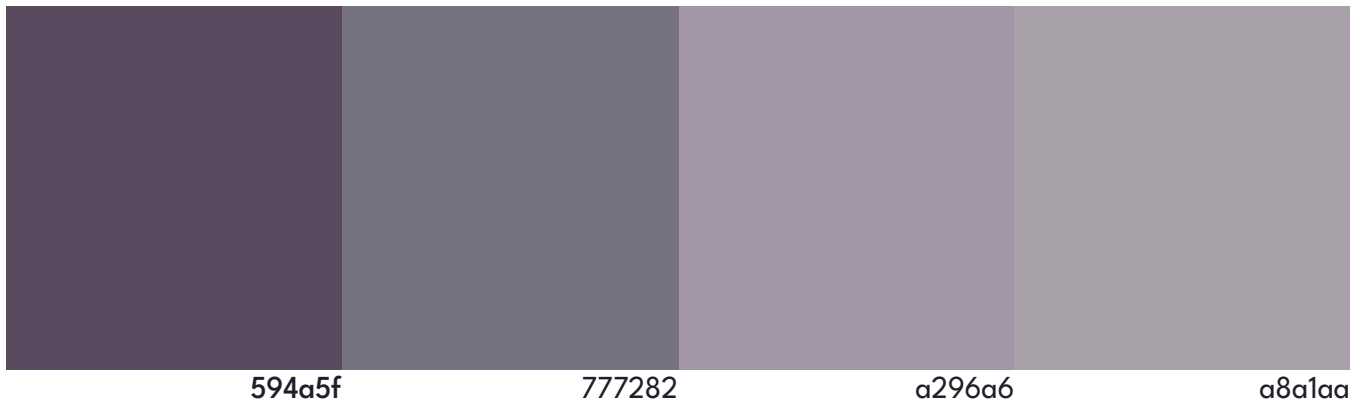
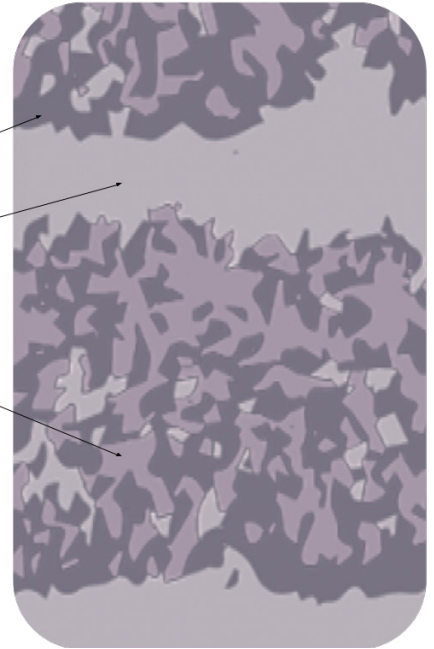


I collaborated with a private carpet company to design residential flooring that embodies biophilic elements. Inspired by lavender fields, I aimed to capture the plant's qualities—its delicate beauty, sense of cleanliness, and serene presence—infusing these natural, calming aspects into the flooring design.

Process

Material Exploration - 2023

	MLCL	COLOR POINT MLCL
	CUT	X
	LOOP	B CUT
	PILE HEIGHT LOOP	AB CUT
 NA	PILE HEIGHT LOOP	A CUT
 NA	PILE HEIGHT LOOP	B LOOP
 NA	PILE HEIGHT LOOP	AB LOOP



Brookstone Residence

Revit Project - 2024



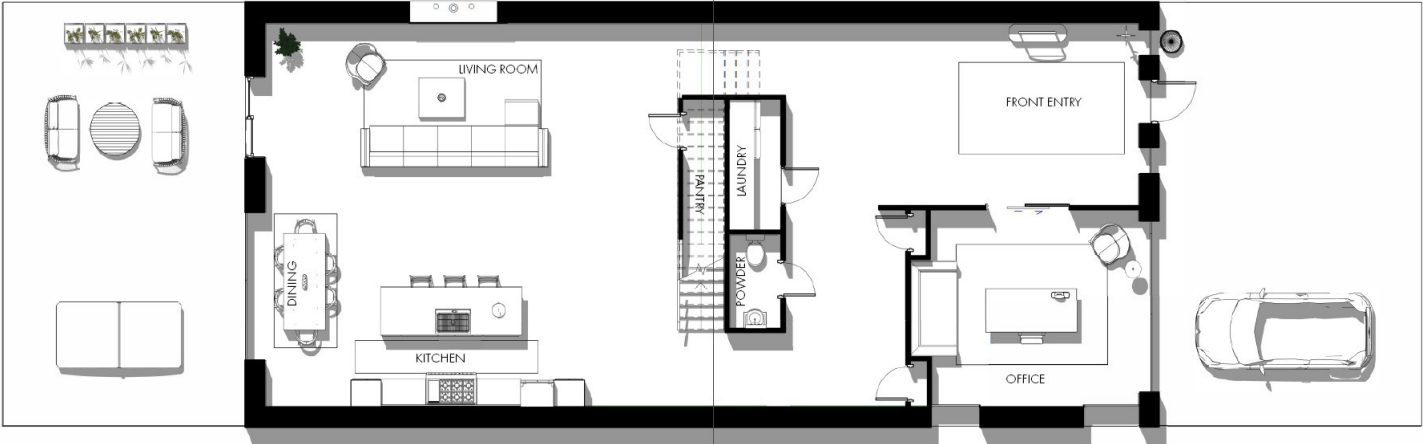
The Carnaby Street Home is a charming oasis designed as a haven for a young family, blending comfort, style, and functionality. This inviting space features a warm color palette and natural textures, creating a cozy yet vibrant atmosphere. The heart of the home is its spacious, modern kitchen, equipped with ample storage and room for family gatherings, encouraging shared moments in cooking and dining. There's also a dedicated craft room, ideal for creativity and family bonding through art and projects. With an open layout, the Carnaby Street Home allows for seamless flow between spaces, inviting family members to come together—whether for a movie night, a lively dinner, or an outdoor play session in the yard. Inspired by the classic charm of Boston and traditional English architecture, the home blends historical elegance with modern comfort, making it a delightful retreat tailored for family life.

Floor Plans

Revit Project - 2024



Level 2



Level 1

Renderings

Revit Project - 2024



Kitchen



Living

Renderings

Revit Project - 2024



Bedroom



Office



Kitchen

Magnifica Anemone

CMF Project - 2024



Magnifica Anemone was a collaborative Colors & Materials and Transportation Design project sponsored by Toyota, designed for the California market. Our team, consisting of a colors and materials designer (myself), an interior car designer (Taegyeong Kim) and an exterior car designer (Taehwan Ahn), was tasked with developing a vehicle inspired by nature. We chose the sea anemone for its striking balance of playfulness and protection. Through close collaboration, we designed a vibrant, distinctive, and innovative vehicle that embodies these qualities while pushing the boundaries of color, materiality, and form.

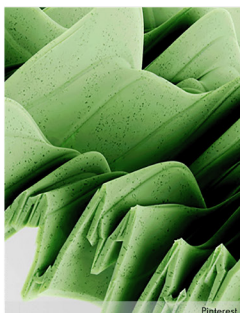
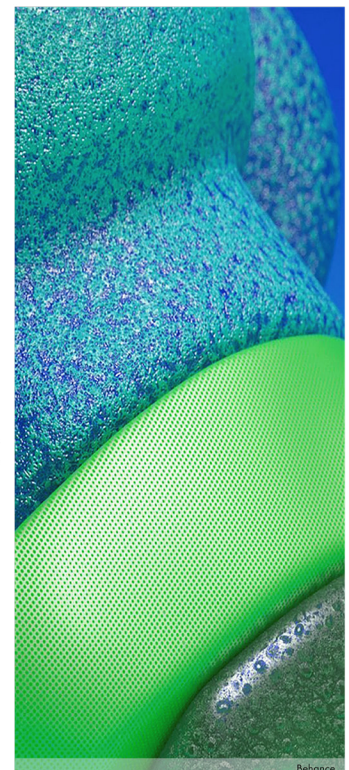
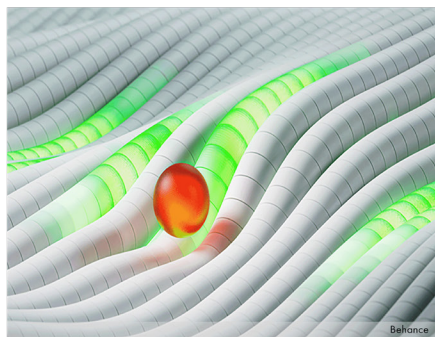
The project deliverables included a vehicle designed to accommodate two adults, two children, and a dog, ensuring both functionality and comfort. Additionally, we developed two distinct colorways and a palette of five to seven exterior colors to enhance the vehicle's dynamic and expressive aesthetic.

Concept

CMF Project - 2024



The sea anemone is a captivating marine creature, known for its delicate beauty and remarkable resilience. Its flowing tentacles move gracefully with the ocean's currents, creating a mesmerizing display that attracts curious sea life. Though it appears soft and inviting, the anemone is fiercely protective, using its stinging tentacles to deter threats while offering shelter to species like clownfish, which find refuge within its embrace. This rare balance of playfulness and defense makes the sea anemone a true marvel of the underwater world—an elegant fusion of beauty, adaptability, and strength, thriving in the ever-changing ocean environment. Its ability to both protect and nurture highlights the delicate power of nature at work.



Research

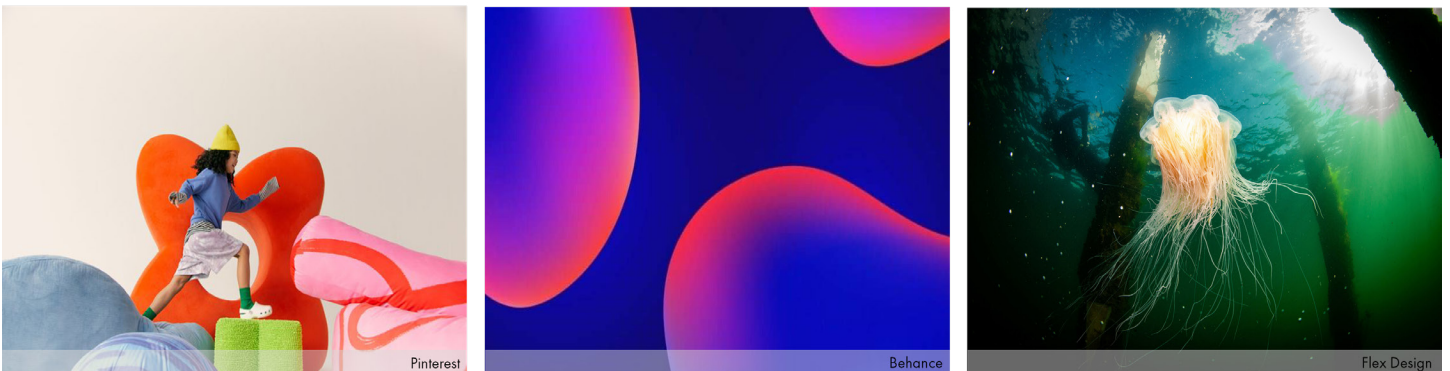
CMF Project - 2024

Storyboard



The Lim family is a young, energy filled family that loves exploring around their city. They are currently faced with many challenges regarding travel. They are always over packing the car with distractions for their two kids, constantly over stressing with fighting, noise, and little to no room to feel comfortable. Their ideal situation is to feel the way they feel when visiting the aquarium; calm, connected, and protected.

Trends

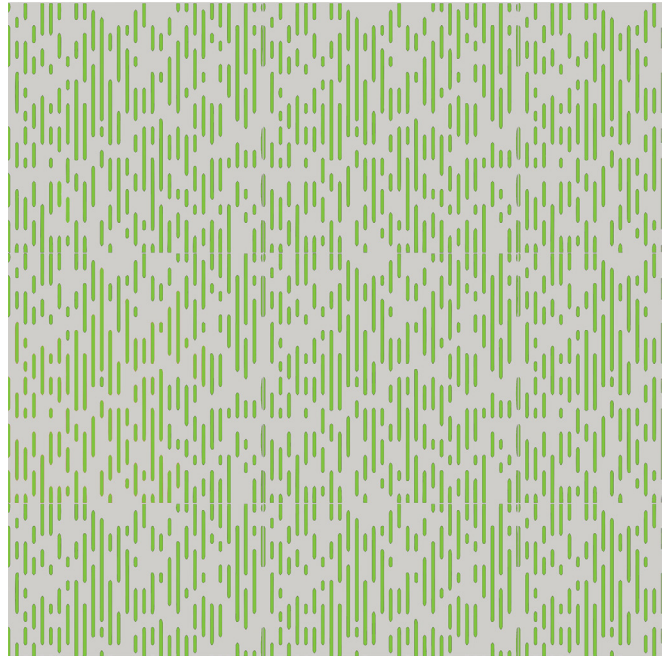
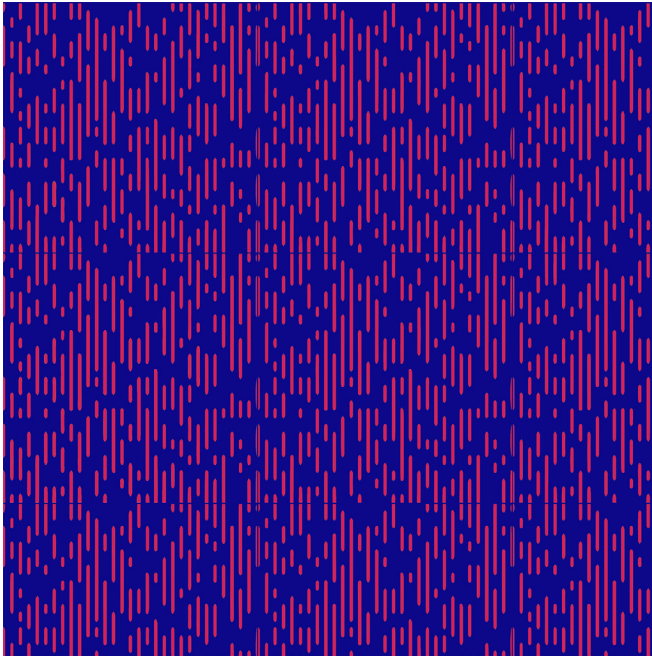


The trends of Power of Play, Fluid Design, and Post-Human Design are reshaping the future of design. Power of Play emphasizes fun and creativity to foster engagement and innovation, while Fluid Design focuses on adaptability and seamless transitions, creating spaces that align with human behavior. Post-Human Design goes beyond human-centered approaches, considering AI, biotechnology, and sustainability to create inclusive and future-focused solutions that address the needs of both humans and non-human entities. Together, these trends highlight a move toward dynamic, inclusive, and forward-thinking design.

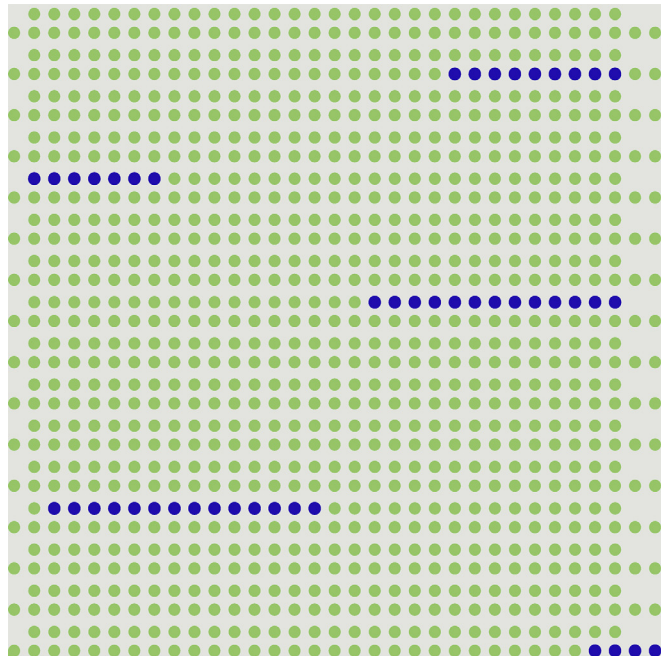
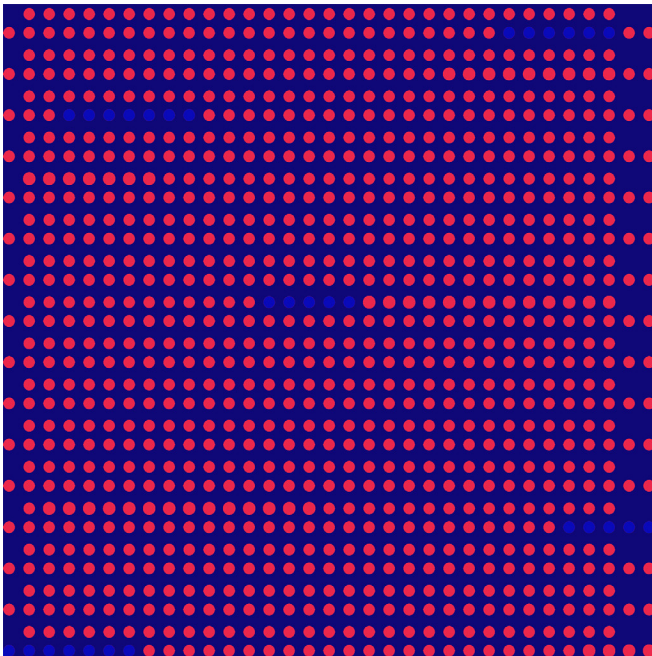
Pattern Development

CMF Project - 2024

Dashed



Soft Dots



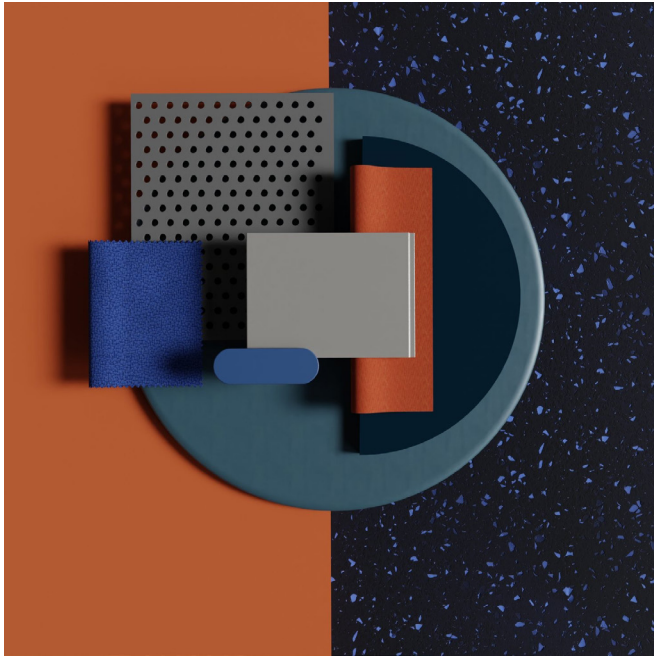
Hidden Line



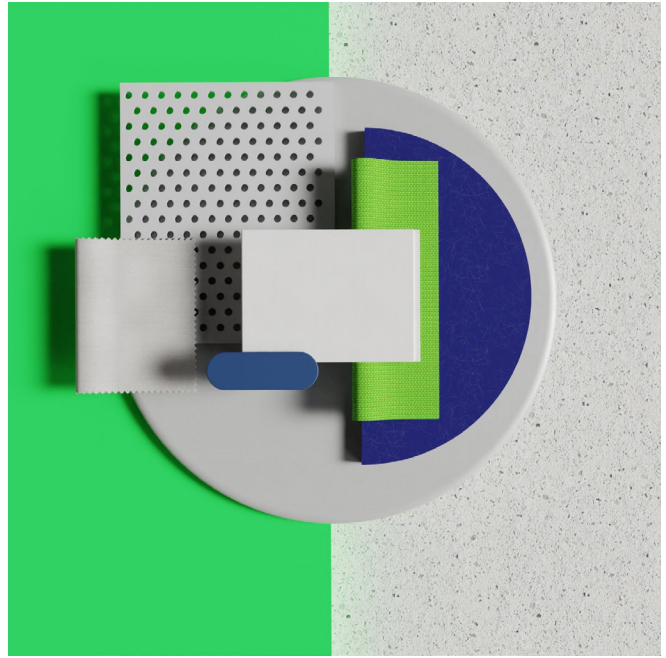
Color Ways

CMF Project - 2024

Interior Color Ways

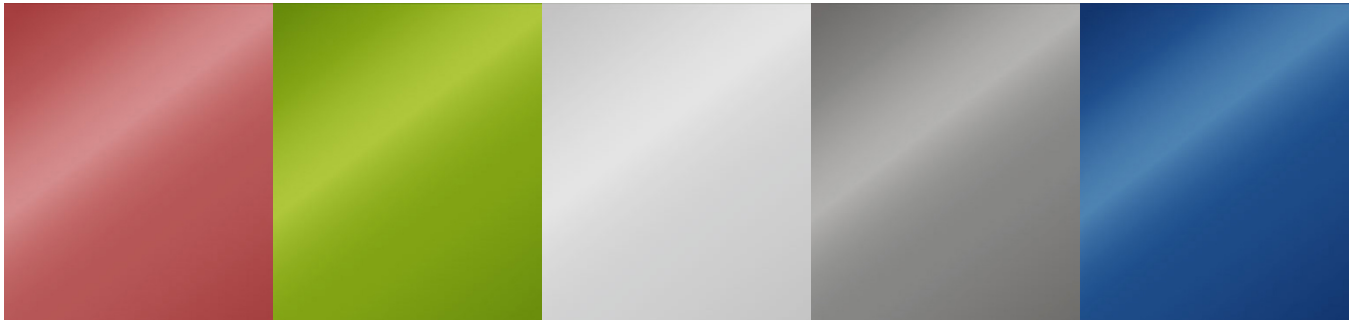


Play



Protect

Exterior Colors



Illustrated by Taewhan Ahn

Material Tray

CMF Project - 2024



