

Nike ACG Means All Conditions Gear



All Conditions Gear. Designed, Tested, and Made on Planet Earth. For Outdoor Use. Conçu, testé et fabriqué sur la planète Terre. Pour une utilisation en extérieur. Design, getestet und hergestellt auf unserem Planeten. Zur Outdoor-Verwendung. Disegnato, collaudato e fabbricato sul pianeta Terra. Per uso all'aperto. Projetado, testado e produzido no Planeta Terra. Para uso em áreas externas. Diseño, pruebas y fabricación en el planeta Tierra. Para uso al aire libre. 環境に配慮してデザイン、テスト、製造されています。屋外用。专为各种天气条件设计、测试和制造。户外使用。專為各種條件所設計、測試、製造。適於室外使用。

Consumer

Job :
Seasonal Park
Ranger

Budget :
\$150

Needs :
One shoe to replace
the multiple pairs
they use throughout
the year in different
parks & climates.



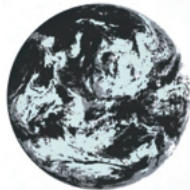
Spring: Arches National Park
Utah, US

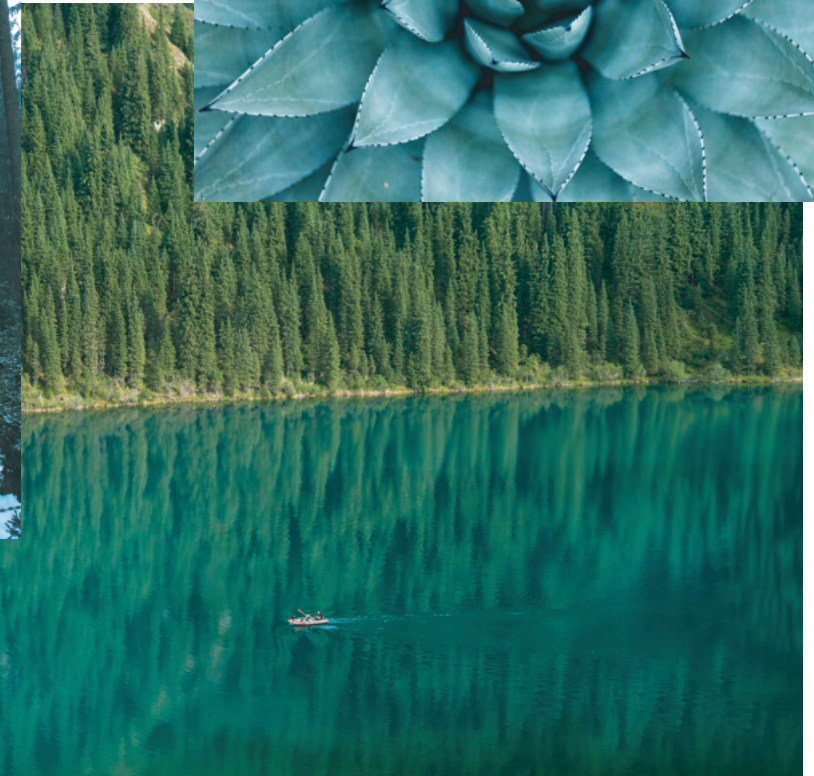


Summer: Haleakalā National Park
Hawaii, US



Fall and Winter: Isle Royale National Park
Michigan, US (Off-Season Research)





Color





DURABLE



**BREATHABLE
YET WATERPROOF**

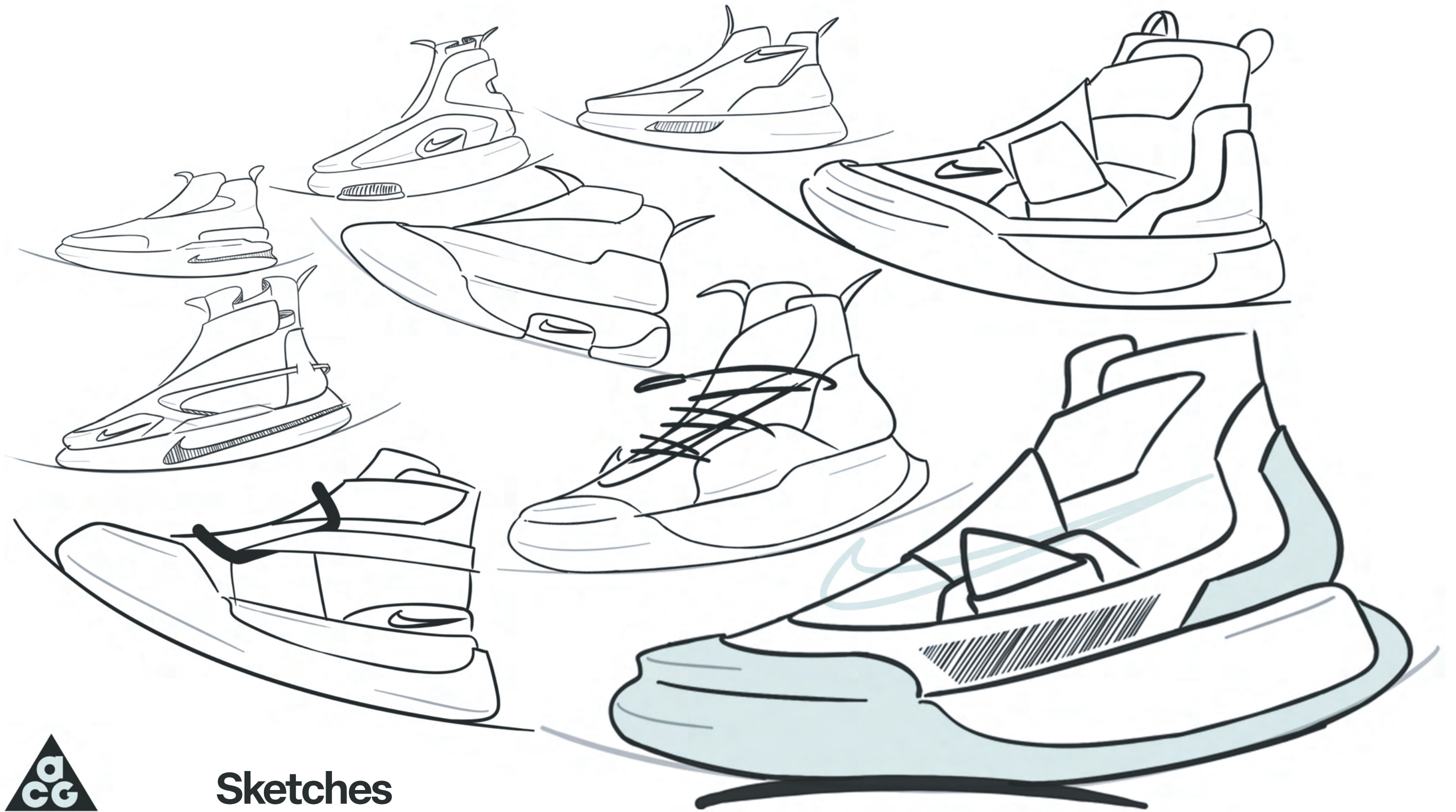


**TECH &
PERFORMANCE DRIVEN**



Material & Form





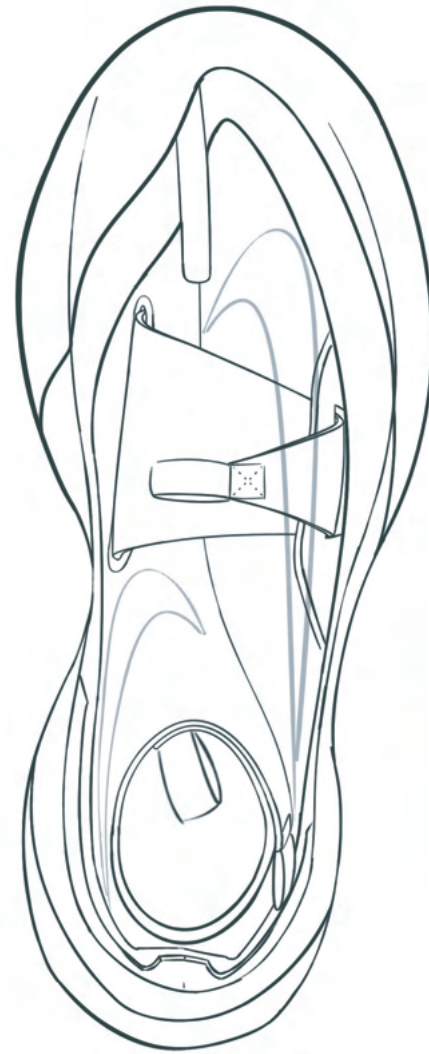
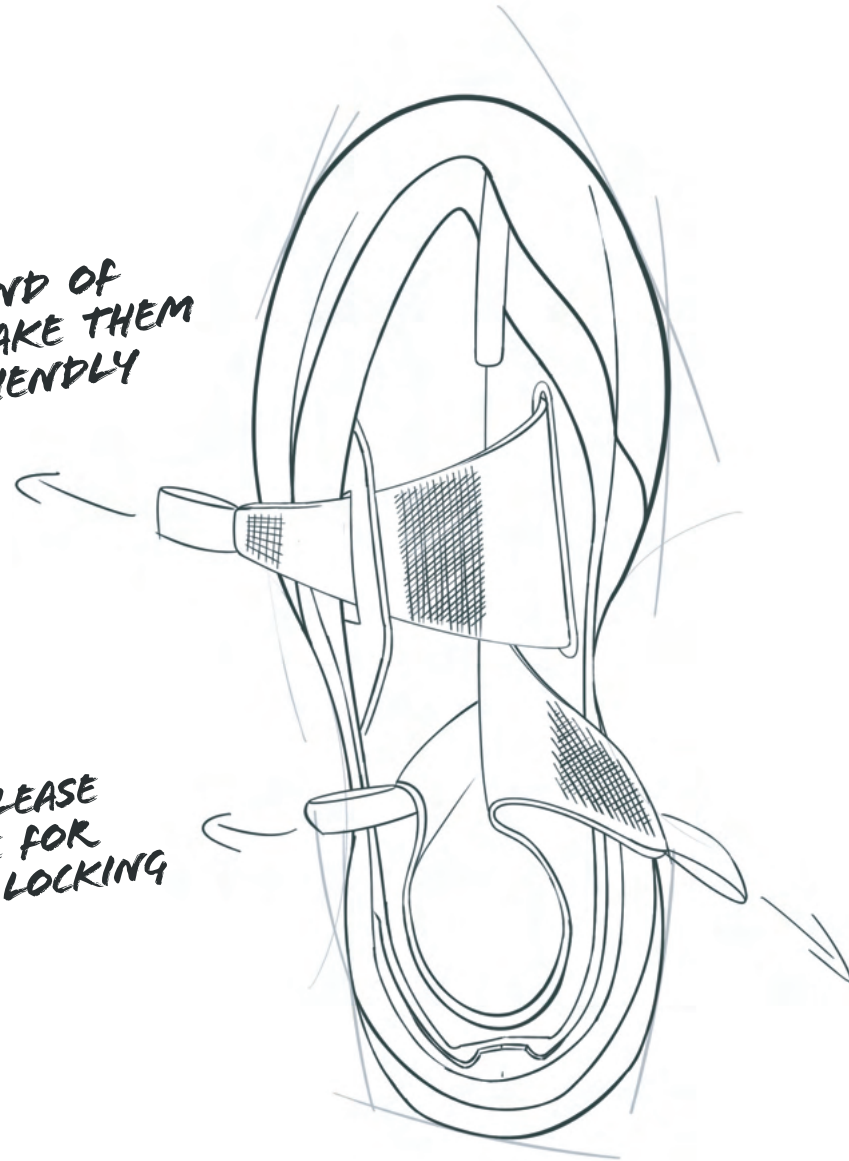
Sketches



Refinement

TAGS AT END OF STRAPS MAKE THEM GLOVE-FRIENDLY

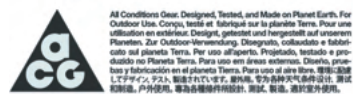
STRAPS RELEASE WITH EASE FOR A SIMPLE LOCKING SYSTEM



LACELESS LOCKING SYSTEM DISCOURAGES DEBRIS CATCHING UPPER



Final Direction **NIKE ECOTONE**



Nike ACG Means
All Conditions Gear

**ECOTONE- THE TRANSITION AREA BETWEEN
TWO OR MORE BIOLOGICAL COMMUNITIES**

